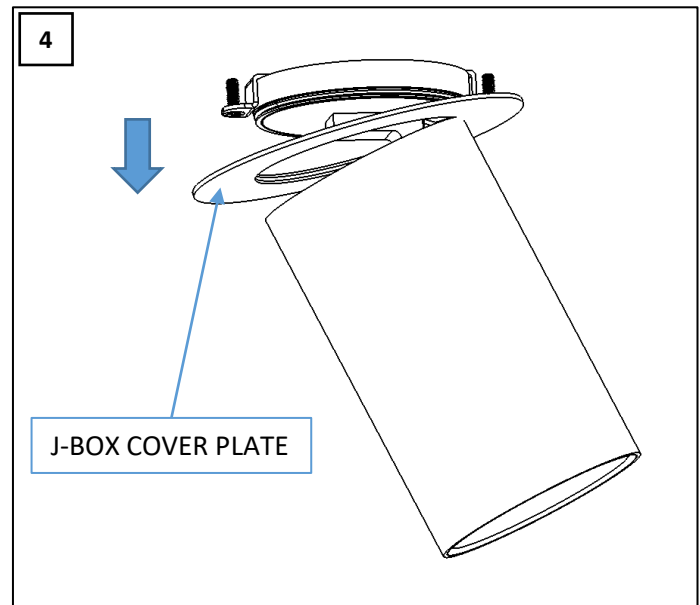
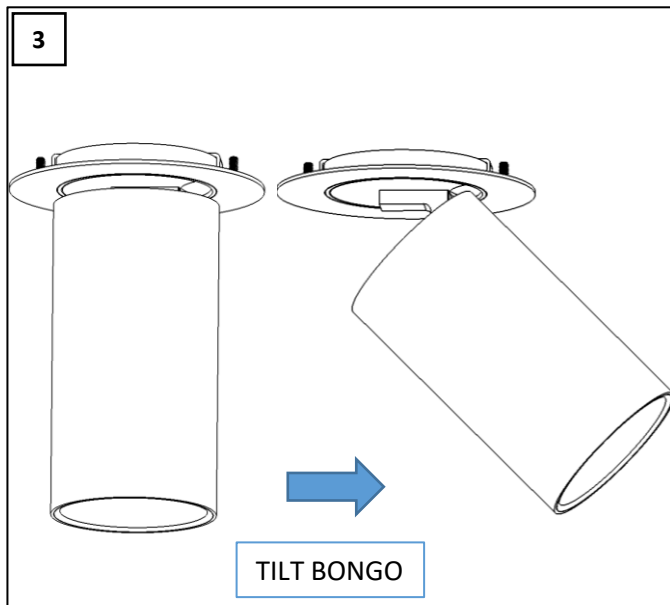
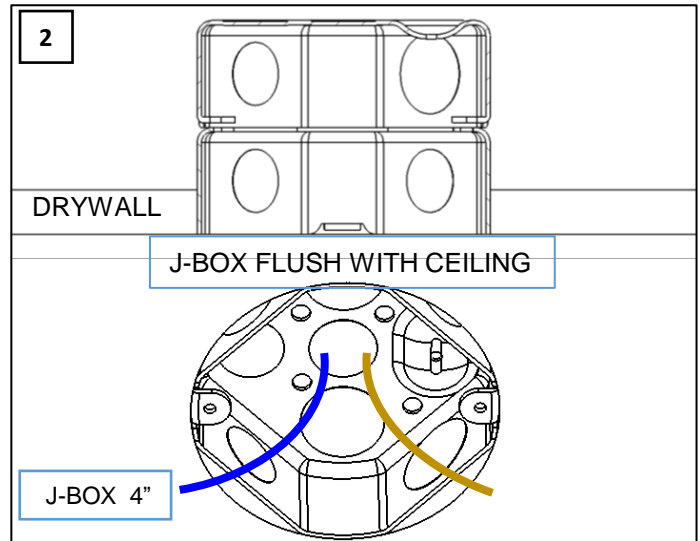
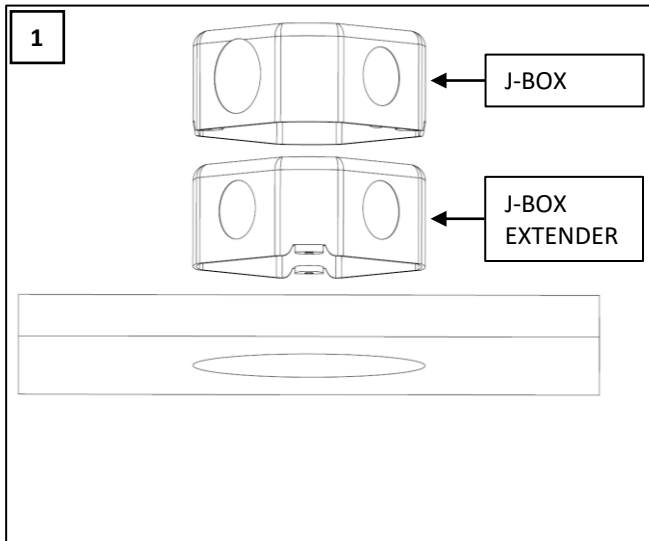


BONGO J “REMOTE DRIVER” INSTALLATION INSTRUCTIONS



WARNING - RISK OF FIRE AND ELECTRICAL SHOCK. FIXTURE MUST BE INSTALLED BY A QUALIFIED ELECTRICIAN ONLY. FIXTURE IS INTENDED FOR INSTALLATION IN ACCORDANCE WITH THE NATIONAL ELECTRICAL CODE, LOCAL AND FEDERAL SPECIFICATIONS. DISCONNECT POWER AT ELECTRICAL PANEL BEFORE SERVICING. RETAIN THESE INSTRUCTIONS FOR MAINTENANCE REFERENCE.

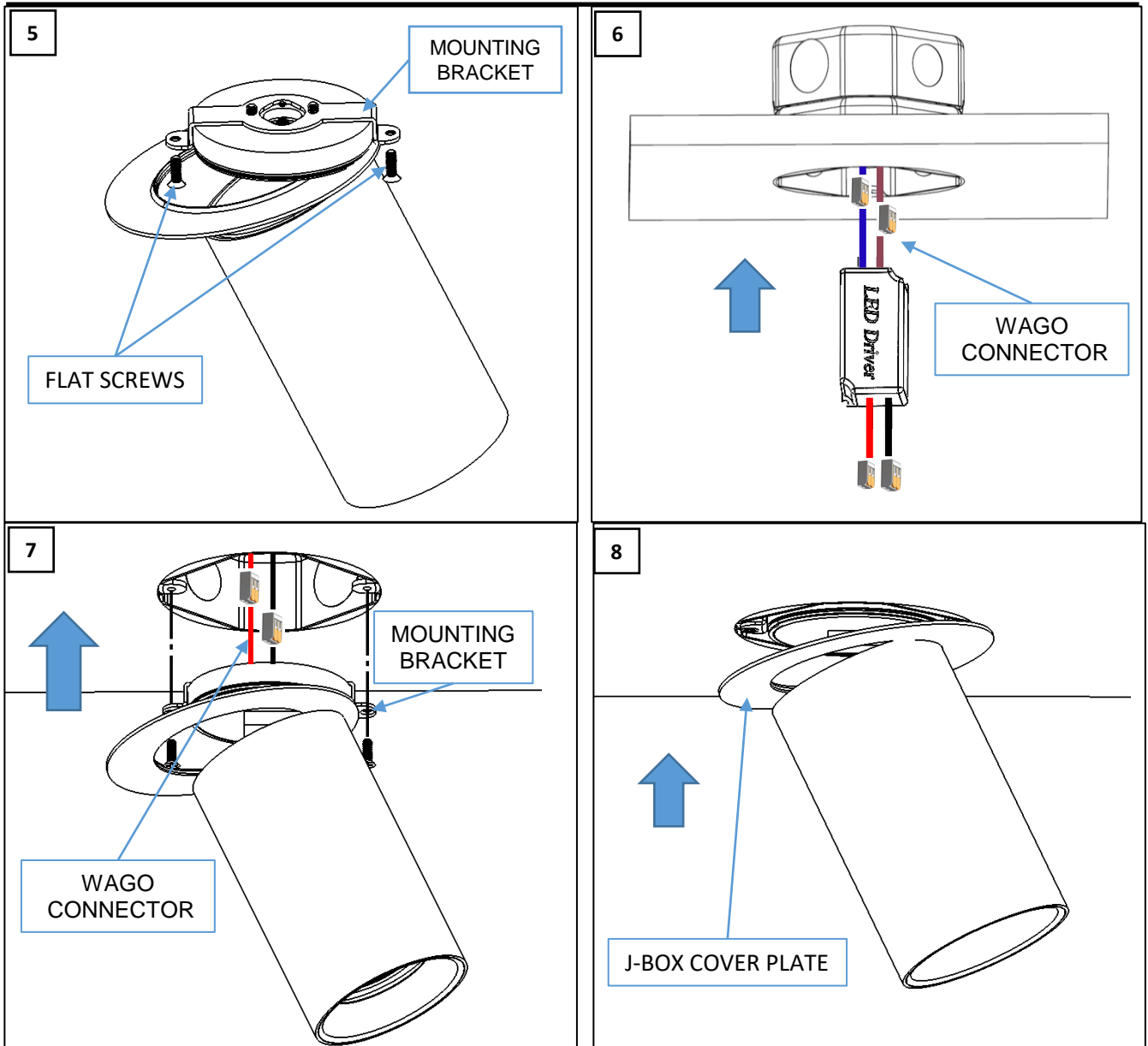
FIXTURE INSTALLATION



1. MAKE SURE A J-BOX EXTENDER IS USED. THE TOTAL DEPTH OF THE J-BOX SHOULD BE 3" OR MORE. (FIGURE 1)
2. J-BOX SHOULD BE PRE-INSTALLED BEFORE INSTALLING THE FIXTURE. MAKE SURE J-BOX IS FLUSH WITH THE DRYWALL. (FIGURE 2)
3. PULL POWER LINES THROUGH THE J-BOX.
4. TILT THE BONGO FIXTURE ROTATING MAX 90°. (FIGURE 3)
5. PULL OUT THE J-BOX COVER PLATE AND LEAVE ON TOP OF THE HINGE/BRACKET. (FIGURE 3)
6. UNSCREW THE TWO FLAT SCREWS IN THE MOUNTING BRACKET. (FIGURE 4)

Zaniboni Lighting, 101 N Garden, Ste 230 • Clearwater, FL 33755 • Ph +17272130410 • Fx +17276839720 • www.zanibonilighting.com
 Zaniboni Lighting shall not be held liable for any damages arising out of the use or misuse of its products nor any damages arising out of the alteration or modification of the instructed installation of its product.

FIXTURE INSTALLATION



6. UNSCREW THE TWO FLAT SCREWS IN THE MOUNTING BRACKET. (FIGURE 5)

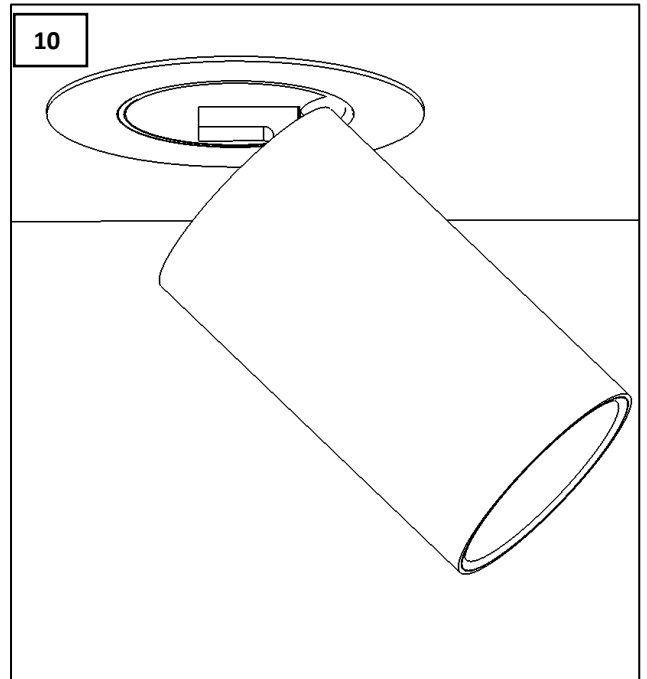
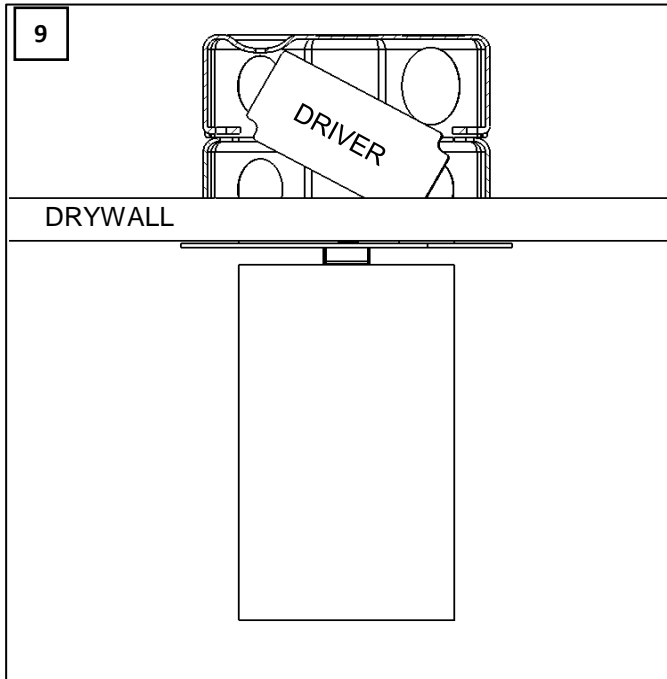
7. CONNECT DRIVER TO LINE VOLTAGE USING PROVIDED WAGO CONNECTORS. CONNECT NEUTRAL TO BLUE/WHITE AND HOT TO BROWN/BLACK AND PUSH THE DRIVER INSIDE THE J-BOX. (FIGURE 6)

8. CONNECT THE POWER LINES FROM THE DRIVER TO THE FIXTURE. RED TO RED AND BLACK TO BLACK USING THE PROVIDED WAGO CONNECTOR. (FIGURE 7)

9. ALIGN THE HOLES OF THE MOUNTING BRACKET TO THE HOLES OF J-BOX. ATTACH THE FIXTURE TO THE J-BOX USING THE TWO FLAT HEAD SCREW (#8-32 x0.5" LONG) PROVIDED BY ZANIBONI LIGHTING. MAKE SURE ALL WIRES ARE UP IN THE J-BOX. (FIGURE 7)

10. PUSH THE J-BOX COVER PLATE ON THE FIXED SIDE THAT IS INSTALLED ON J-BOX. (FIGURE 8)

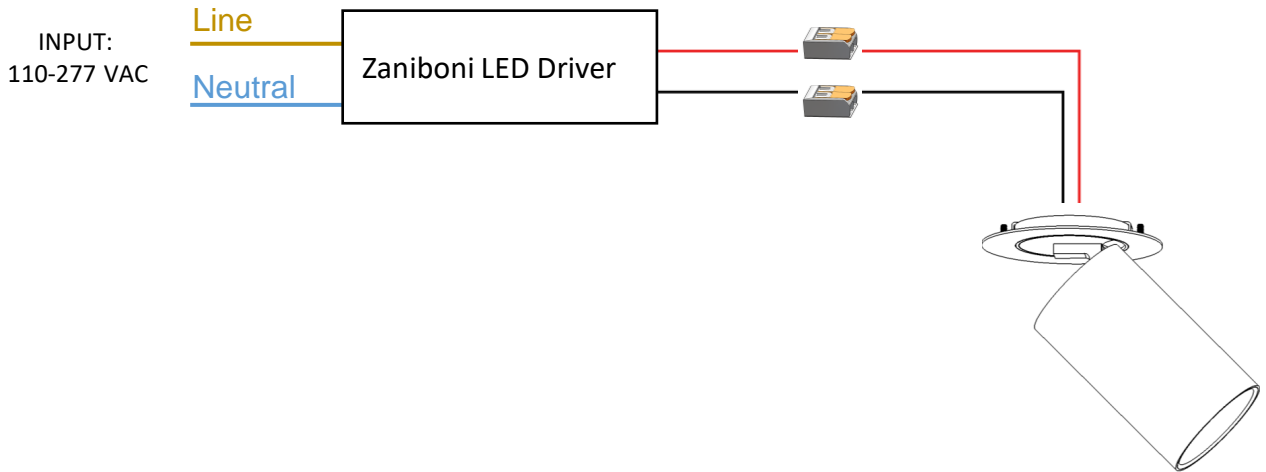
FIXTURE INSTALLATION



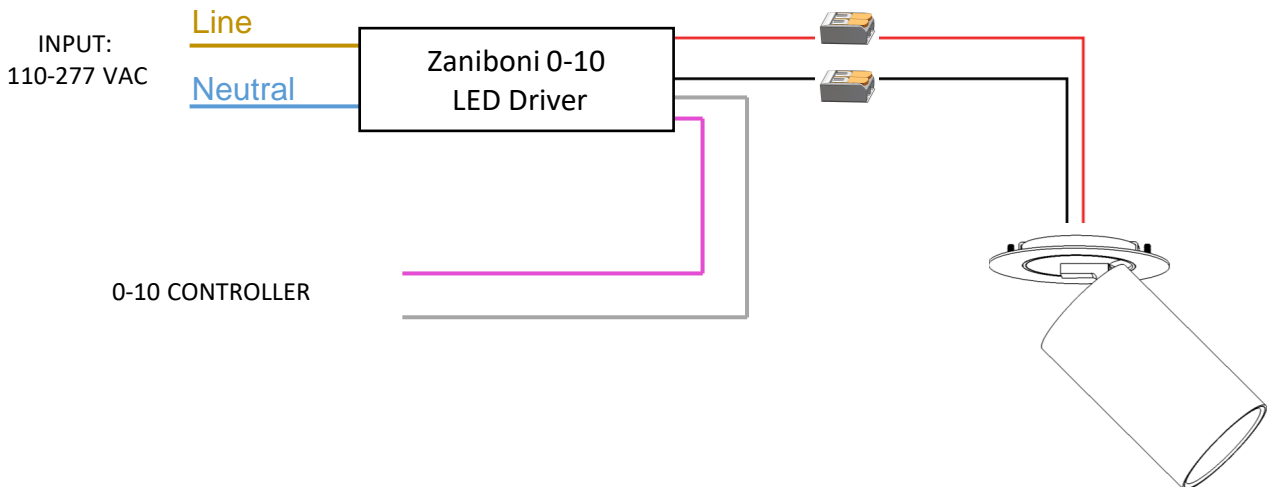
11. ORIENT THE FIXTURE. PROCEED TO SWITCH POWER ON. (FIGURE 9 & 10)

WIRING DIAGRAM – LINE VOLTAGE

- **ELV, NON-DIM, BLUETOOTH DRIVER**



- **0-10V DRIVER**



**The manufacturer reserves the right to change or modify the design, dimensions and specifications at anytime without notice. The manufacturer accepts no liability for consequential damage which is occasioned to the user base on the data provided.*